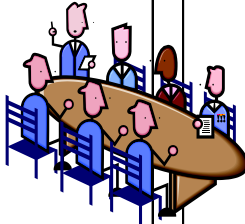


WE ARE HERE TO HELP

HISTORY OF THE CHARITY

Henley Educational Trust (HET) is the latest development in a local educational charity that has a history of providing confidential educational financial assistance to needy families since 1604.

Prudent financial management has not just maintained the status quo against falling trends. We have shown an increase in asset value as well as income funds available for both individual and organisational educational grants.



GRANT PAYMENT



The amount of grant awarded depends on income, family size and circumstances. Income is compared against a sliding scale that may reduce the total awarded on higher family incomes.

There is an expectation that any deposit will be paid by the applicant except in exceptional circumstance.

Payment will be made direct to the school, music tutor or organisation. Footwear payment is by way of Clarks Shoes shop gift card.

Please complete a grant application (downloadable via the internet) include proof of income and sent to the Clerk to the Trustees



Clerk to the Trustees
Mrs Claire Brown
Syringa Cottage
Horsepond Road
Gallowstree Common
Reading, Oxon, RG4 9BP
Tel: - 01189724575

www.henleyeducationaltrust.com

Email: -henleyeducationaltrust@hotmail.co.uk

ELIGIBILITY

YOU MUST BE UNDER 25 YEARS AND
Must live in Henley North, Henley South, Bix
Rotherfield Greys or Remenham.

OR

Attend Gillotts Secondary School, Valley Road
Primary, Badgemore Primary, Trinity Primary
and Sacred Heart RC primary Schools.

OR

Have attended one of those eligible establishments for two years.

Pre-school playgroups establishments and pupils within qualifying parishes may also qualify.



PREVIOUS GRANTS

The grant must be for educational use!

- School uniform grant (Maximum £120 Gillotts, £75 for primary school. Footwear to attend school-Maximum £30.)
- Playgroup fees-(application at beginning of term, payment at end against invoice.)
- Sports club fees and equipment (minus 10-15%.)
- School residential trips (minus deposit.)
- Youth organisation uniform such as scouts, guides, brownies, St Johns, Red Cross and associated educational equipment.
- Music tuition fees.
- Educational clubs (Homework, breakfast, after-school, etc.)